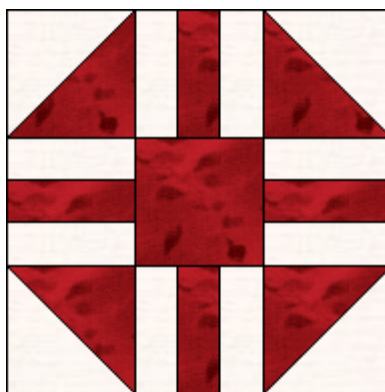




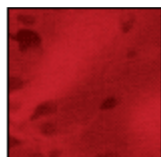
The Golden Thimble

<http://www.thegoldenthimble.com>



Quilters Path

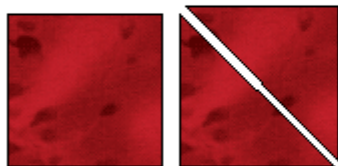
12" Finished Block



Cut 1 square 4 1/2"



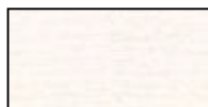
Cut 2 squares 4 7/8", then
subcut these into 4 triangles



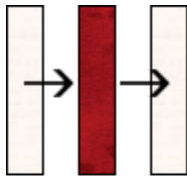
Cut 2 squares 4 7/8", then
subcut these into 4 triangles



Cut 4 rectangles that are 1 7/8" high by 4 1/2" wide



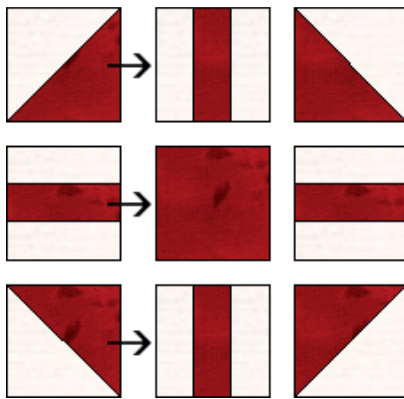
Cut 8 rectangles that are 1 7/8" high by 4 1/2" wide



Using a $\frac{1}{4}$ " seam allowance sew the rectangles together as shown making a total of 4 units like this



Using a $\frac{1}{4}$ " seam allowance sew the rectangles together as shown making a total of 4 units like this



Using a $\frac{1}{4}$ " seam allowance, sew all your units together using the picture as a guide. Press. Your block should measure $12\frac{1}{2}$ " by $12\frac{1}{2}$ " square.

