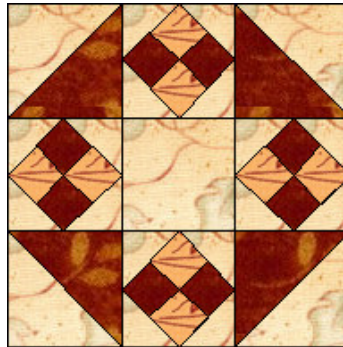
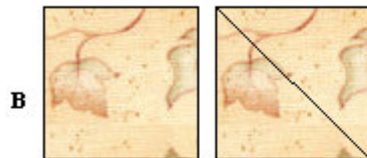


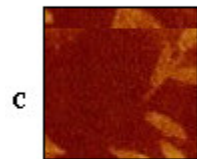
# Pinwheel



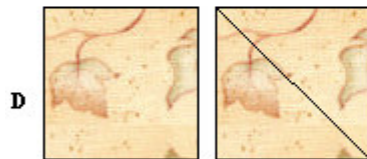
**4 1/2 Inch Square**  
**1 Piece**



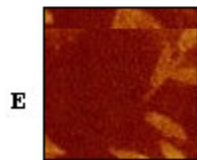
**5 Inch Square**  
**Cut a total of 2 Squares, on wrong side of fabric draw a diagonal line. Set aside**



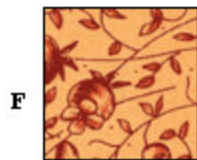
**5 Inch Square**  
**Cut a total of 2 Squares**



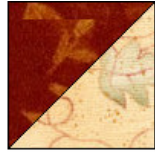
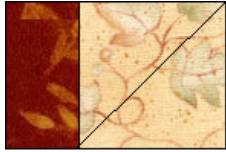
**2 7/8 Inch Square**  
**16 Triangles cut from 8 Squares**



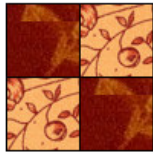
**1 7/8 Inch Square**  
**8 Pieces**



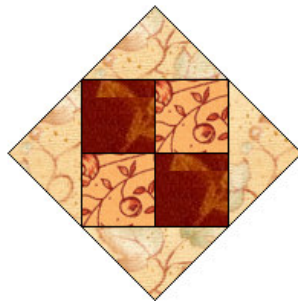
**1 7/8 Inch Square**  
**8 Pieces**



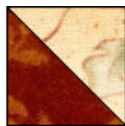
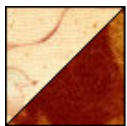
With right sides together, take a piece C and B and sew together, sewing a scant 1/4 inch seam from both sides of the drawn line . Cut apart on the drawn line and press to the dark side. Repeat with the other 2 B and C squares. You now have 4 half square triangle sections.



Take the 1 7/8 inch squares and sew together making a four patch as shown



You have 16 triangles cut from the 8 2 7/8" squares. with 4 triangle per square, sew them to the 4 patch as shown.



Piece your block together as shown

