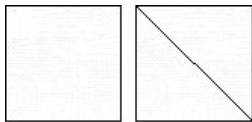
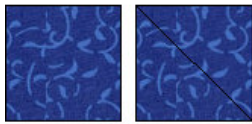


Patches

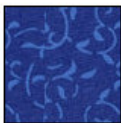
12" Finished Block



Cut 4 squares at $3 \frac{7}{8}$ " and then subcut these into 8 triangles



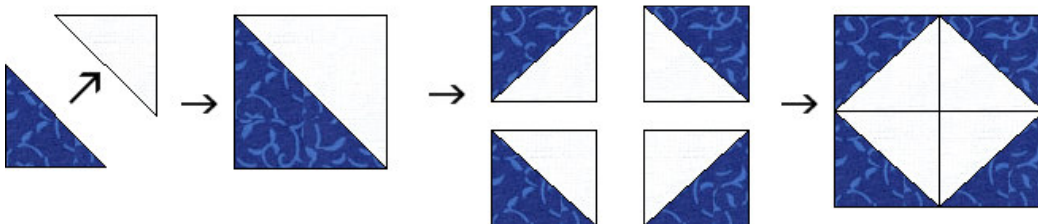
Cut 4 squares at $3 \frac{7}{8}$ " and then subcut these into 8 triangles

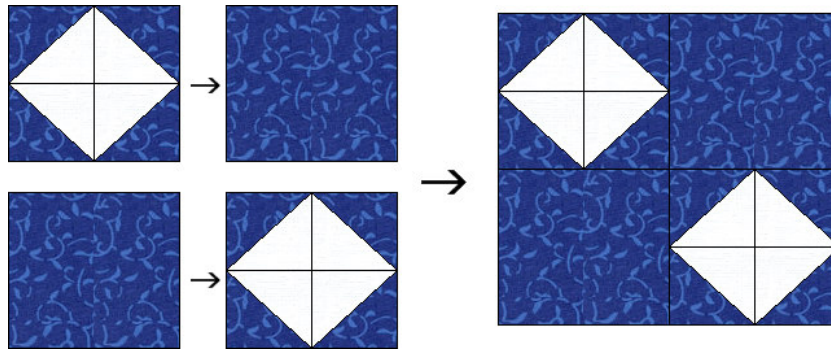


Cut 2 squares that are $6 \frac{1}{2}$ "

Using a $\frac{1}{4}$ " seam allowance, sew the white and blue triangles together as shown making a total of 8 units. Press towards the dark side.

Using a $\frac{1}{4}$ " seam allowance sew 4 together as shown making 2 units of 4 half square triangles. Press





	<p style="text-align: center;"><u>Patches</u></p> <p style="text-align: center;">80" by 80" 36 blocks in this quilt 4" border with 4" cornerstones</p> <p style="text-align: center;">Fabric Requirements</p> <p style="text-align: center;">4 $\frac{3}{4}$ yards of Blue Fabric 1 $\frac{3}{4}$ yards of White Fabric $\frac{7}{8}$ yard of Binding Fabric of Choice</p> <p>For Binding cut 9 strips that are 3 $\frac{1}{2}$" wide by width of fabric and then sew together in one long strip. Press wrong sides together and apply to finished quilt.</p>
--	---

© Copyright 2008 All rights reserved, Rebecca Kuck, St. Mary's, Ohio, USA. All quilt patterns and images are the property of Rebecca Kuck for The Golden Thimble. The pattern cannot be copied and distributed or displayed on websites without my permission. This pattern is not intended for commercial use in any form, and is provided only for home and personal use only.