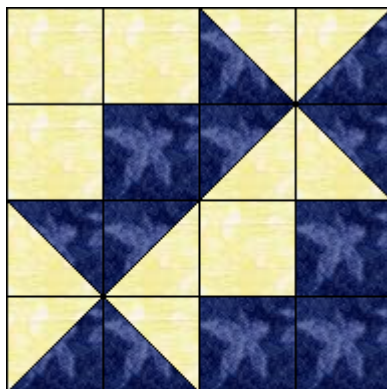


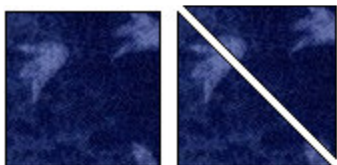


The Golden Thimble

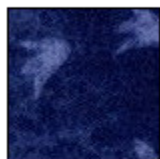
<http://www.thegoldenthimble.com>



King Me!
12" Finished Block



Cut 4 squares that are $3 \frac{7}{8}$ " and then subcut these into 8 triangles.



Cut 4 squares that are $3 \frac{1}{2}$ "



Cut 4 squares that are $3 \frac{1}{2}$ "

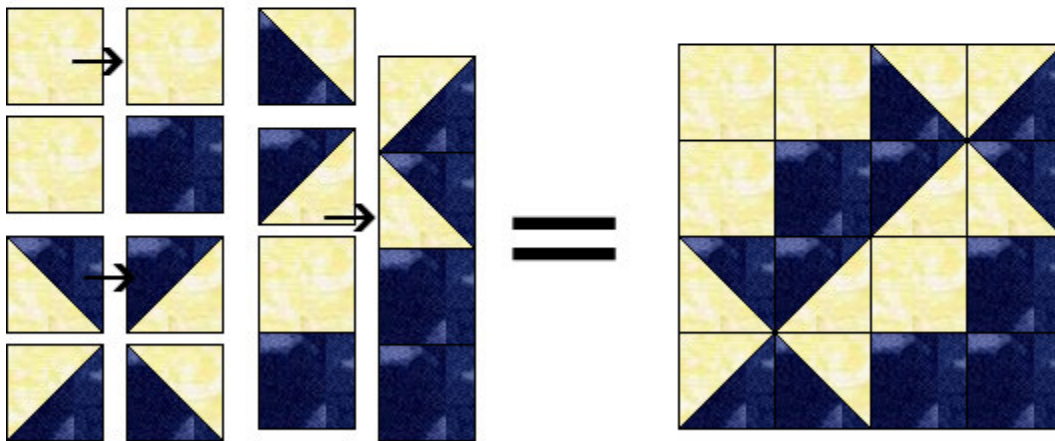


Cut 4 squares that are $3 \frac{7}{8}$ " and then subcut these into 8 triangles.

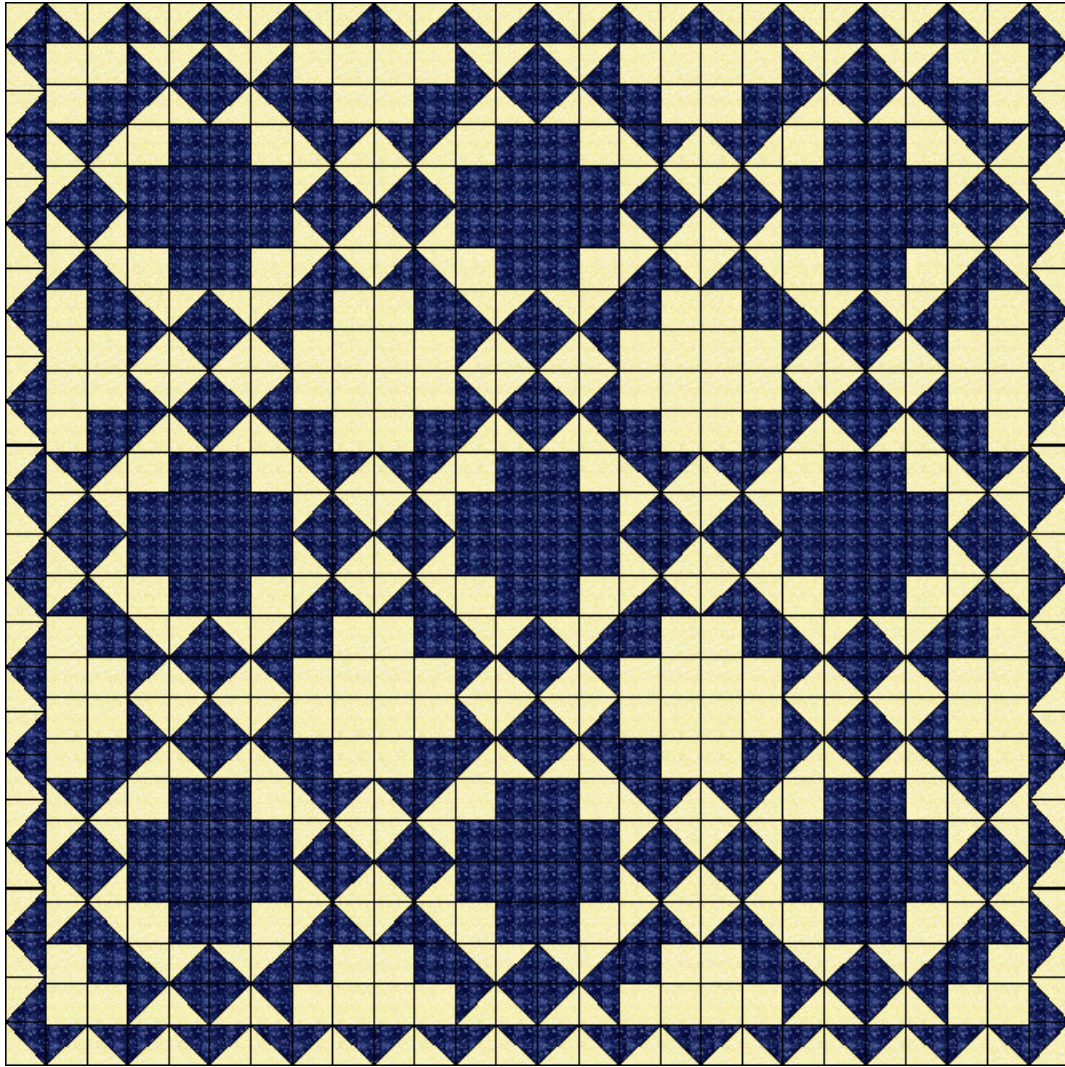


Using a 1/4" seam allowance sew the triangles together making a total of 8 half square triangle units

Lay out the pieces as shown and using a 1/4" seam allowance sew your block together.



Your block should now measure 12 1/2" unfinished



82" by 82" Quilt

Yardage Requirements

Yellow Fabric.....5 yards

Blue Fabric.....4 yards

Backing Fabric color of Choice.....5 yards

Binding Color of Choice.....7/8 yard

(for 1 1/2" finished binding cut 9 strips that are 3 1/2" by width of fabric)

Queen Size Batting