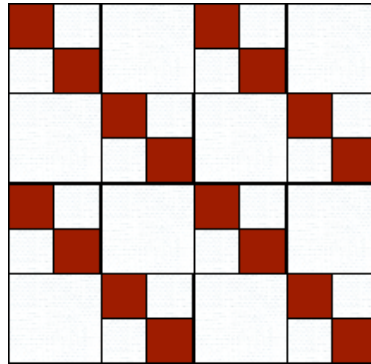


The Golden Thimble

<http://www.thegoldenthimble.com>



4 Patch Staircase
10" Finished Block



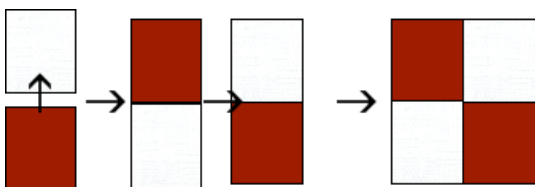
Cut 8 squares that are 3" each



Cut 16 squares that are 1 3/4" each

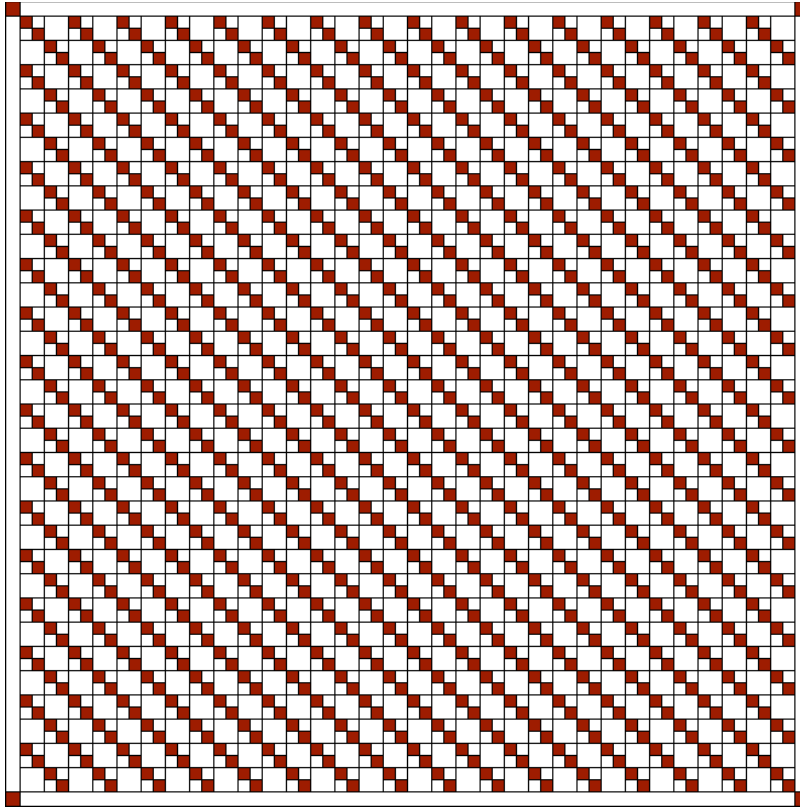
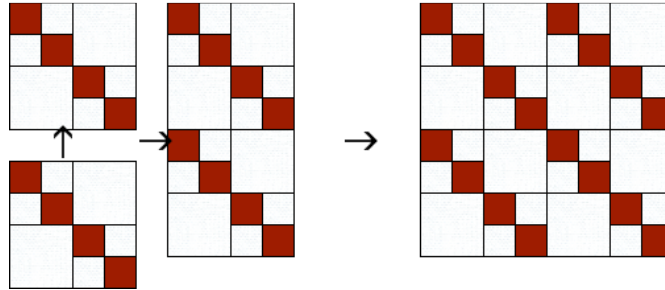


Cut 16 squares that are 1 3/4" each



Using a 1/4" seam allowance make a total of 8 units like this!

Using a 1/4" seam allowance piece your block together.
Your block will measure 10 1/2" unfinished!



83" by 83" Quilt

There are a total of 64 blocks in this quilt.

2 1/2 yards of red fabric for blocks and border corner squares

6 1/8 yards of cream fabric for blocks and border

7 yards of backing fabric of choice

5/8 yard for 1" finished straight binding.....cut 9 strips that are 2 1/2" by Width of Fabric

Queen size cotton batting

Borders are 1 1/2" wide